

Information Analysis for Microsoft Office  
Information Analysis for Internet Explorer  
Information Analysis for Visual Studio  
Information Analysis Desktop

# Getting Started User Guide

Information Analysis for Visual Studio V2012 Release 3  
Section II

*The Speak Logic Project*

[www.speaklogic.org](http://www.speaklogic.org)

## Installation


Auto install is completely straight forward and should be completed without any issue.

## Communication Configuration

Before start using any of the programs, it is always good to configure your computer to enable you to communicate with other users. By configuring your system, you will be able to contact other people and provide feedback to other people and also request feedback from *The Speak Logic Project*.

Below is a typical communication configuration for Gmail. In order to send messages or feedback to other users properly, make sure the configuration dialog is setup properly.

The communication configuration command is located under

Program	Location
Information Analysis for Microsoft Office	Under About Tab
Information Analysis for Internet Explorer	Under Help
Information Analysis for Visual Studio	Tools->Speak Logic->Comm Configuration
Information Analysis Desktop	Configure Button Located at the bottom right  corner

Communication Configuration

Configuration

Person Name: Jean Dolphin

Person Email: JeanDo33@Gmail.com

Outgoing Server: smtp.gmail.com

Incoming Server: smtp.gmail.com

User Name: JeanDo33

Password: \*\*\*\*\*

Security: Implicit

Time Out: 30

Use Authentication: ☒

Incoming Port: 995

Outgoing Port: 465

Apply Cancel

### Internet Explorer

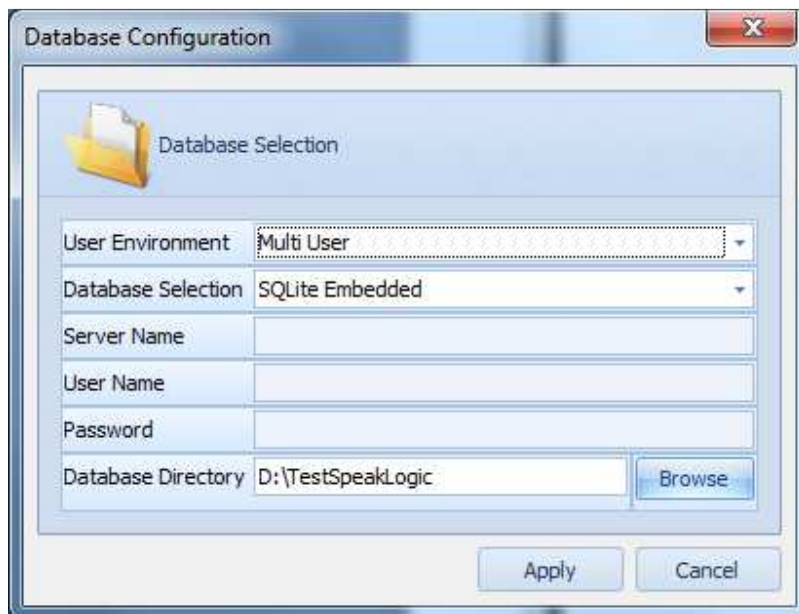
If the toolbar does not show up when you start Internet Explorer, just go to Tools->Toolbars->Speak Logic

## Information Analysis for Visual Studio V2012 Release 3 Section II

New features included in the latest release

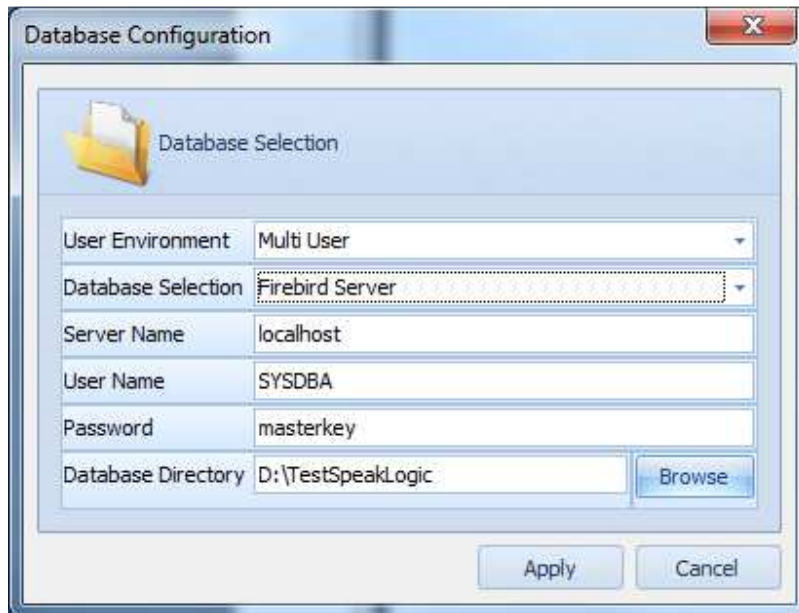
- Multiple databases support
- Code review analysis
- Multi user support
- User database support
- Ability to add user to project
- Ability to add user status
- Ability to add project status
- Project communication
- Contact user from project
- Code review selection in context menu
- List of code to be reviewed or list of reviewed code
- Local machine identification
- And much more

To get started, after installation, start with database configuration as shown by the figure below



Databases supported including SQLite and Firebird; if using SQLite, the database directory must be shared so other users can view it. For instance for the figure above, D:\TestSpeakLogic will be a shared directory in order to enable multiple users from multiple computers; if the directory is not shared, then it will not be possible to view other users. You need to create a shared directory in one station and the other users must map a network drive to that directory in each station.

If the database selection is Firebird Server, the database directory cannot be shared. In this case, the database directory is viewed as the directory where you want the Firebird database file. The figure below shows a typical configuration for Firebird Server



From the figure above, D:\TestSpeakLogic is a directory in the computer where the Firebird Server database file is located and it is not a shared directory. Attempt to use a shared directory in this case may raise an error.

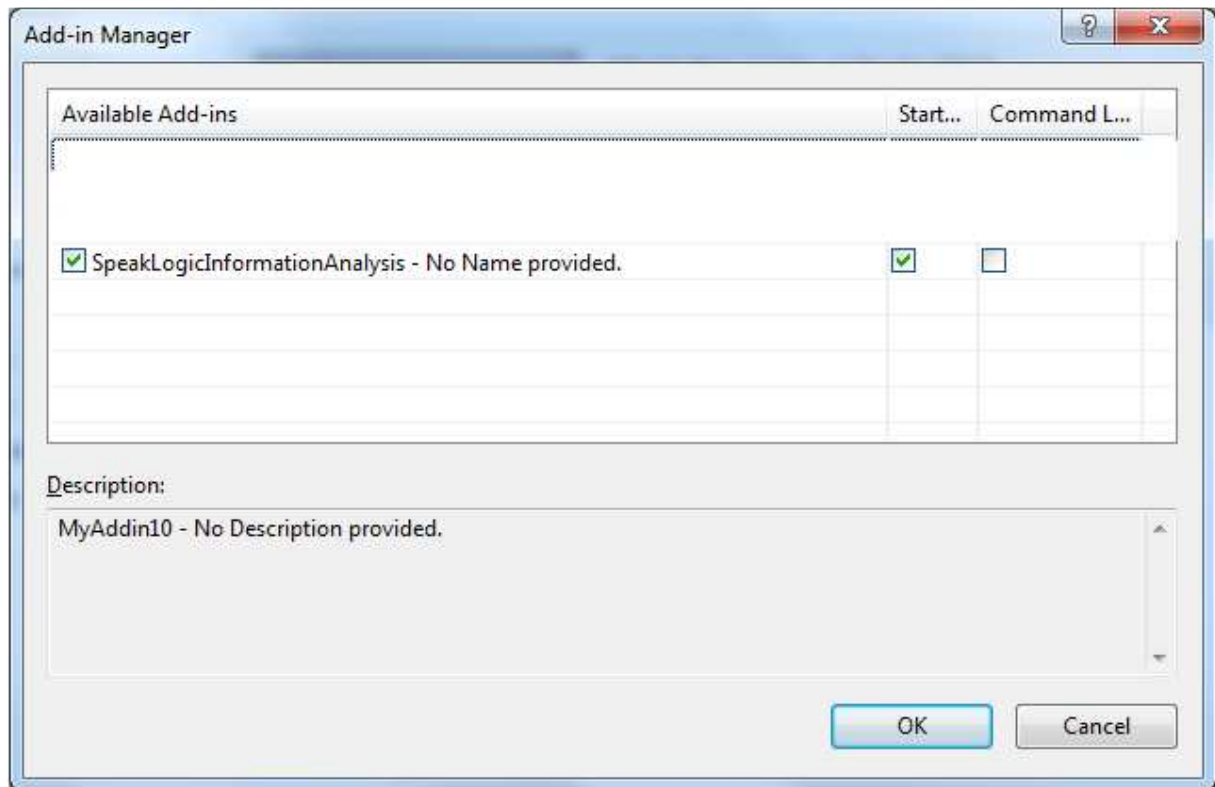
The **database configuration** file is located under

C:\Users\UserName\Documents\SpeakLogic\InformationAnalysis\Information

And the file name is **Information.txt**

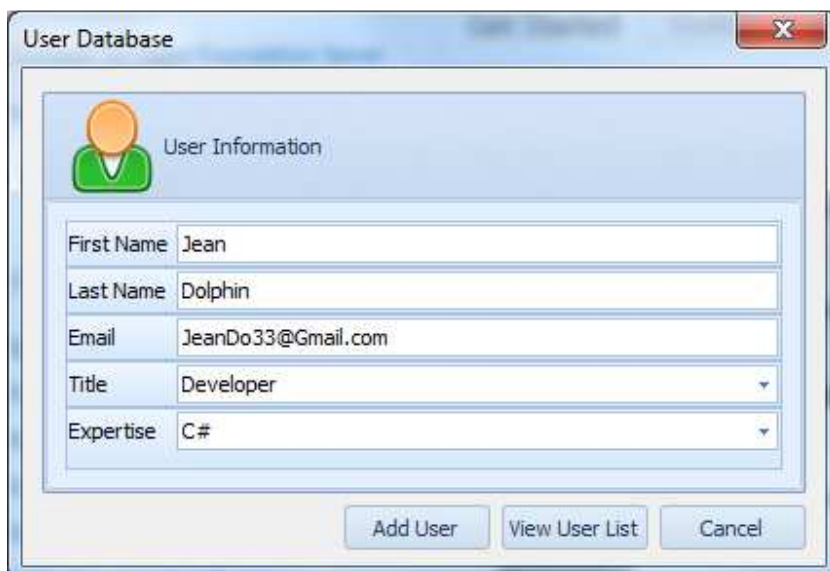
The Speak Logic menu should appear both under the tools menu and after the tools menu. If for some reason it does not show up after the tools menu, you can enable the add in from the add in manager as shown here

The next time you start Visual Studio if you still have the same problem, you can configure the short cut like "C:\Program Files\Microsoft Visual Studio 10.0\Common7\IDE\devenv.exe" /resetaddin SpeakLogicInformationAnalysis.Connect. After executing the command below, if the menu does not appear immediately and you receive no error, you will need to close Visual Studio and reopen it back



### Multi User Environment

Add user to the database by choosing build user database from the menu; the figure below shows how a user is being added to the database



After adding users to the database, list of users from the database is shown here

### Warning

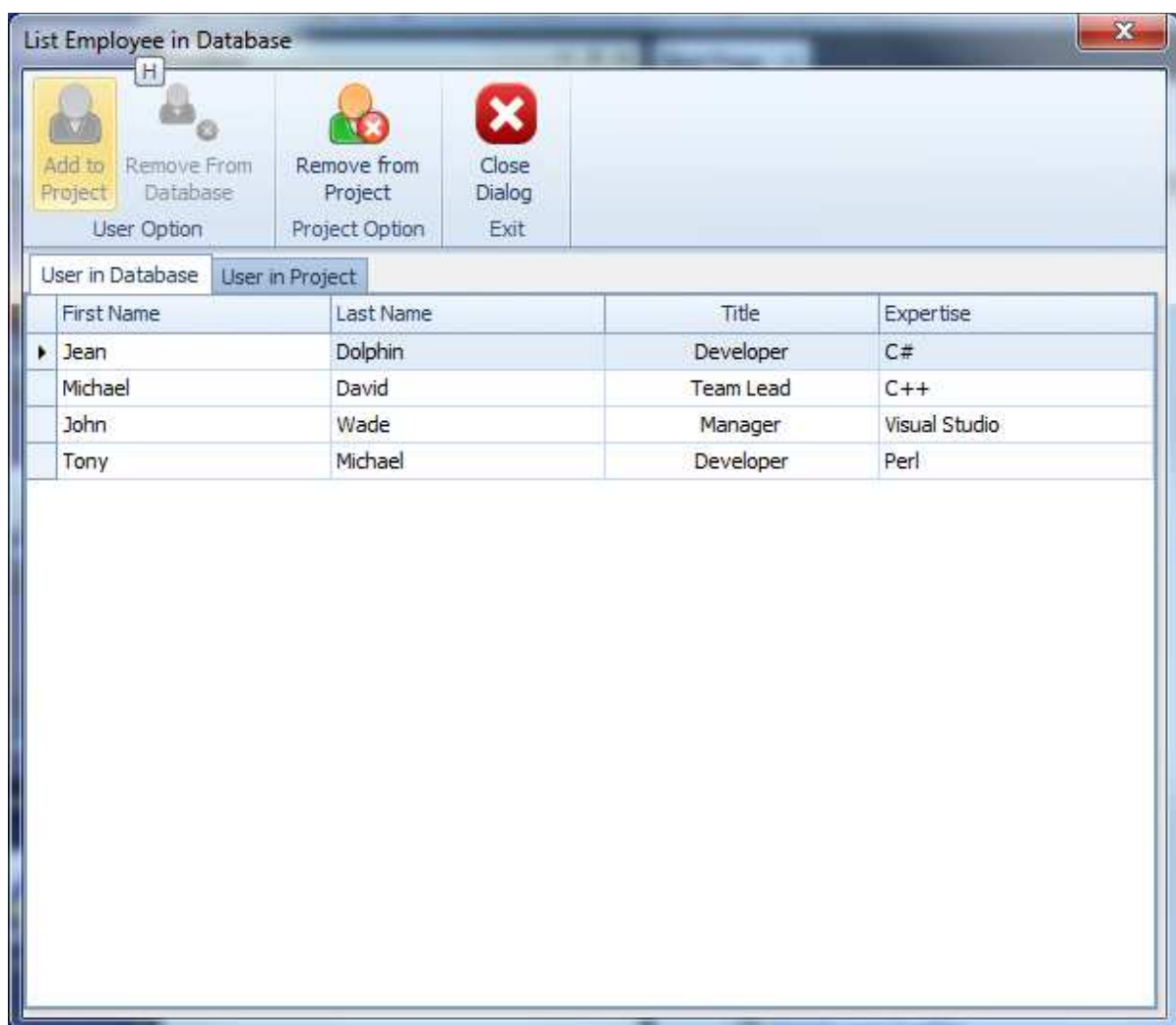
Don't use duplicate name; duplicate name is not supported at this time

If two people have the same name, simply use initial to differentiate the names. For instance if two developers name "Tony David", then they can be added as

Tony David I

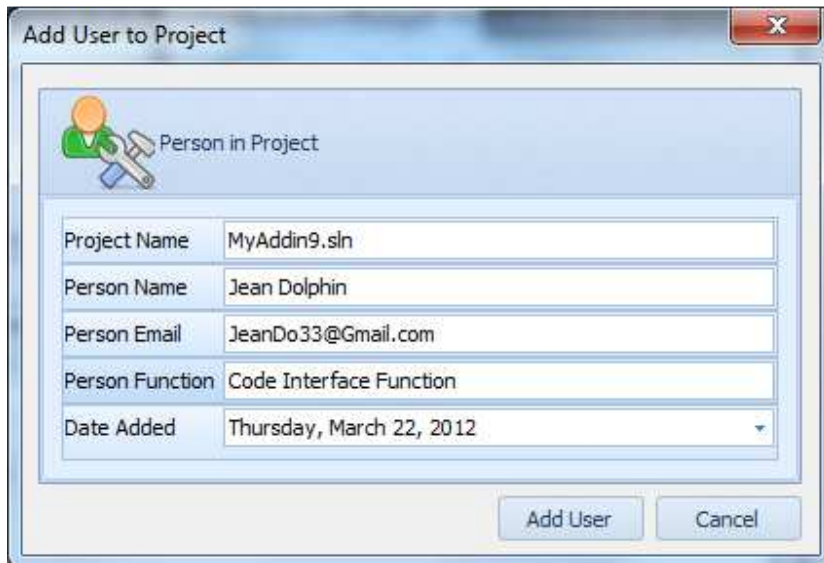
Tony David II

List of users can be viewed after being added as follow



Adding users to the database provide a list of users you want to work with. After users are added to the database, then they can be added to the project. To add users to the project, simply select specific name and click add to project

A user is added to the project as shown below



The image shows a Windows-style dialog box titled "Add User to Project". It features a header bar with a close button (X) in the top right corner. Below the title bar, there is a section with a person icon and the text "Person in Project". The main area of the dialog contains five input fields, each with a label on the left and a text box on the right:

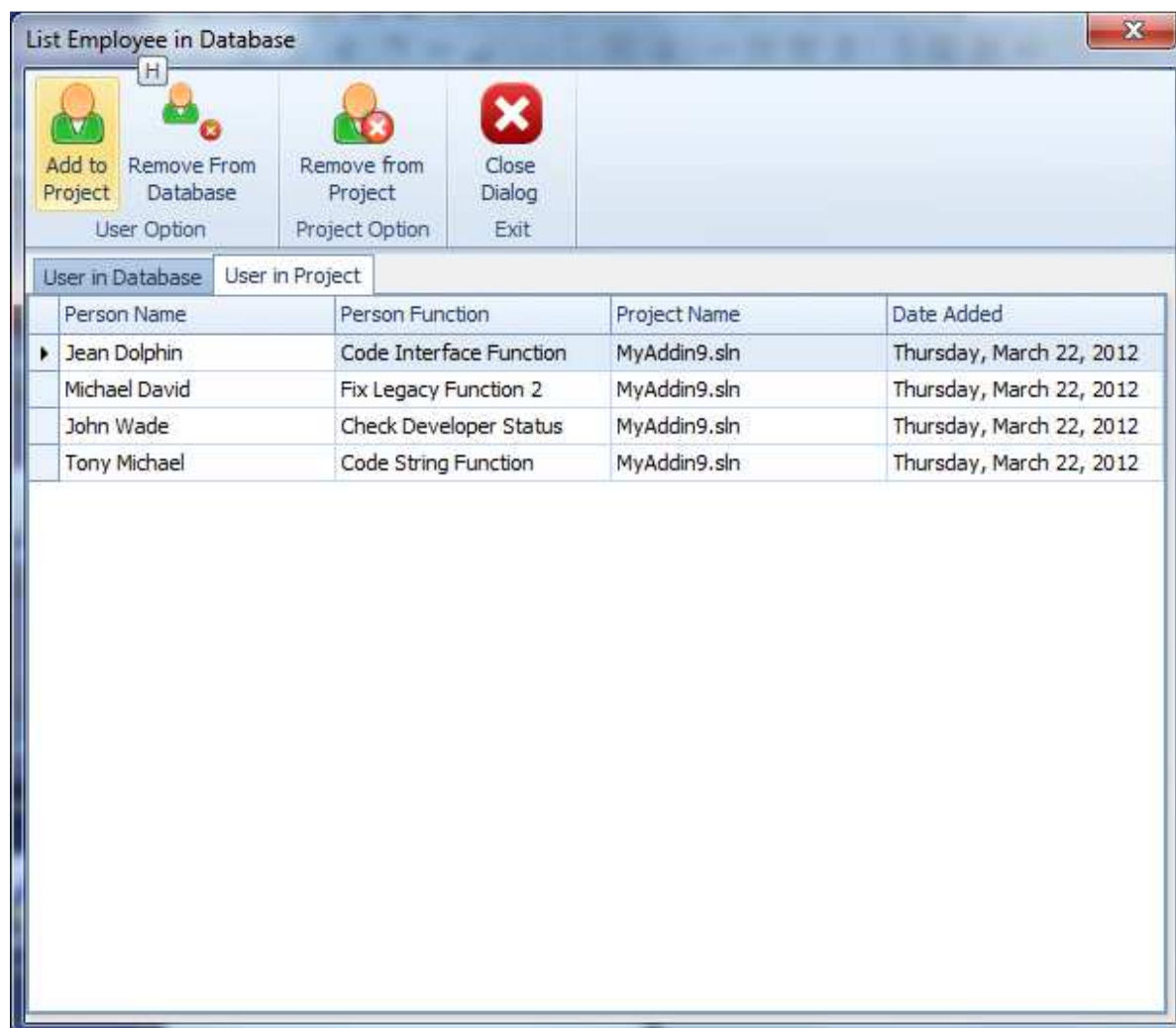
Field Label	Field Value
Project Name	MyAddin9.sln
Person Name	Jean Dolphin
Person Email	JeanDo33@Gmail.com
Person Function	Code Interface Function
Date Added	Thursday, March 22, 2012

At the bottom right of the dialog, there are two buttons: "Add User" and "Cancel".

If the current project is open, then it will show in the user name field. Each user you add to the project must have a function as shown by the diagram above

After adding multiple users to the project, we can show the list of user





As you can see from the diagram above, each user we add to the project does have a function in the project.

### **User Status and Project Status**

From each machine, each developer can add status of their works and also check for the overall project status; below is the status added by Jean Dolphin in Jean Dolphin's computer

**Individual Status Dialog**

Status Property

Project Name: MyAddin9.sln

Person Name: Jean Dolphin

Person Function: Code Interface Function

Percent Completed: 8.00

Completed Date: Thursday, March 22, 2012

Apply Cancel

By selecting the project status from the Speak Logic menu, the overall project status can be viewed as shown below

**Project Status Dialog**

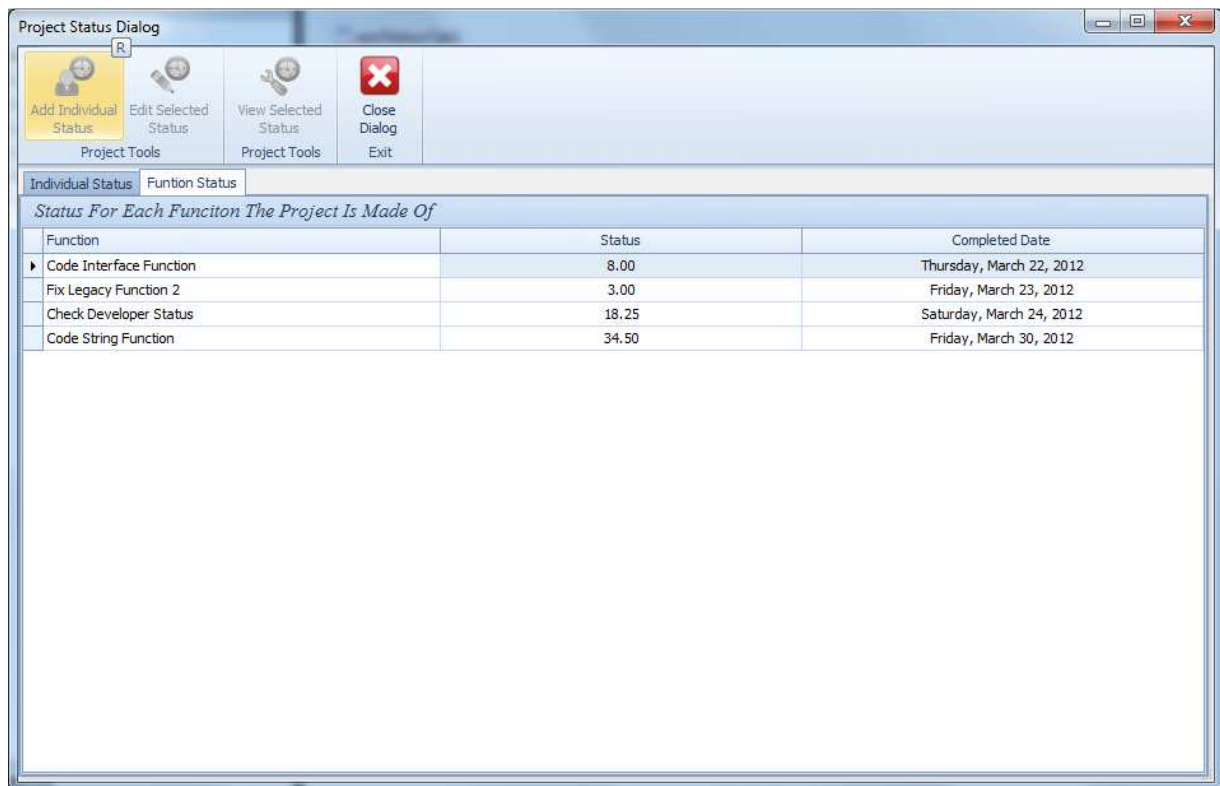
Project Tools: Add Individual Status, Edit Selected Status, View Selected Status, Close Dialog

Individual Status | Function Status

*Individual Status for People in The Project*

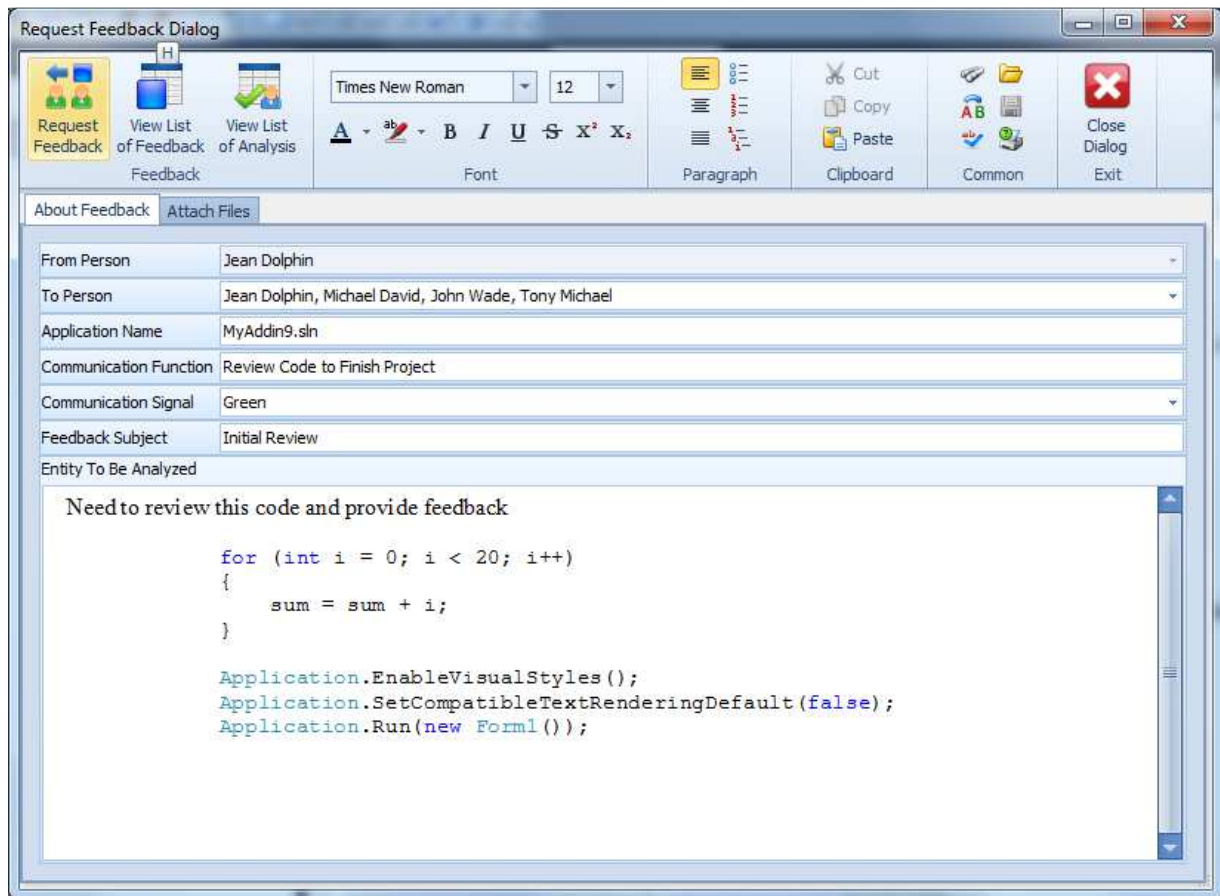
Person Name	Person Function	Function Status	Complete Date
▶ Jean Dolphin	Code Interface Function	8.00	Thursday, March 22, 2012
Michael David	Fix Legacy Function 2	3.00	Friday, March 23, 2012
John Wade	Check Developer Status	18.25	Saturday, March 24, 2012
Tony Michael	Code String Function	34.50	Friday, March 30, 2012

The overall project status in term of function can also be viewed from the dialog

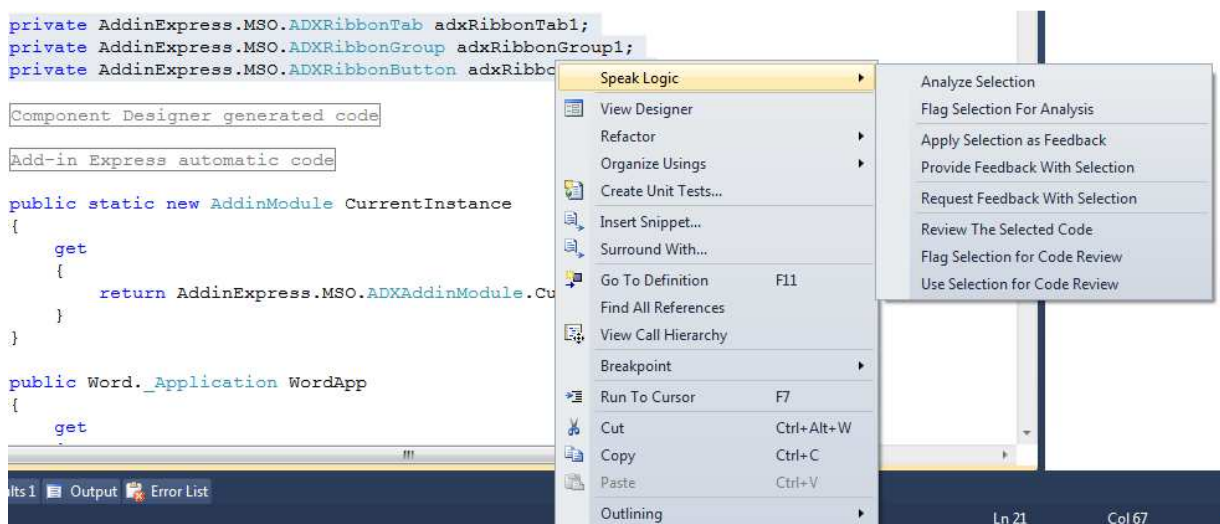


## Code Review

Code review is being viewed as feedback and analysis; for instance we need to have people to reviewed our codes and provide feedback to us; in this case within the project, we can simply choose Code Review Analysis under the Speak Logic Menu



While from the diagram above we select couple of people to review one set of code, we can also select specific code from the project and select specific user we want to review that code

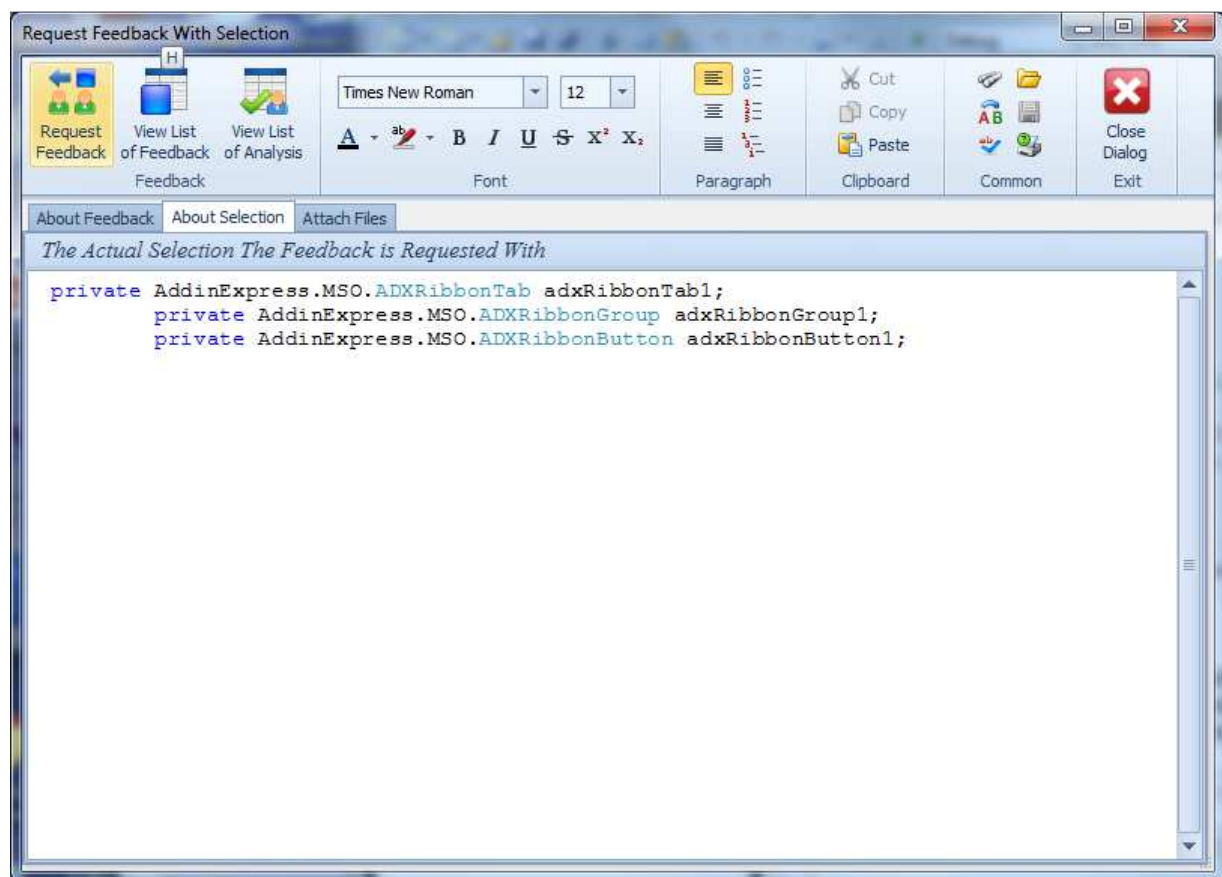


The diagram above shows the Speak Logic context menu, where specific code can be selected and use for review; in this case we have

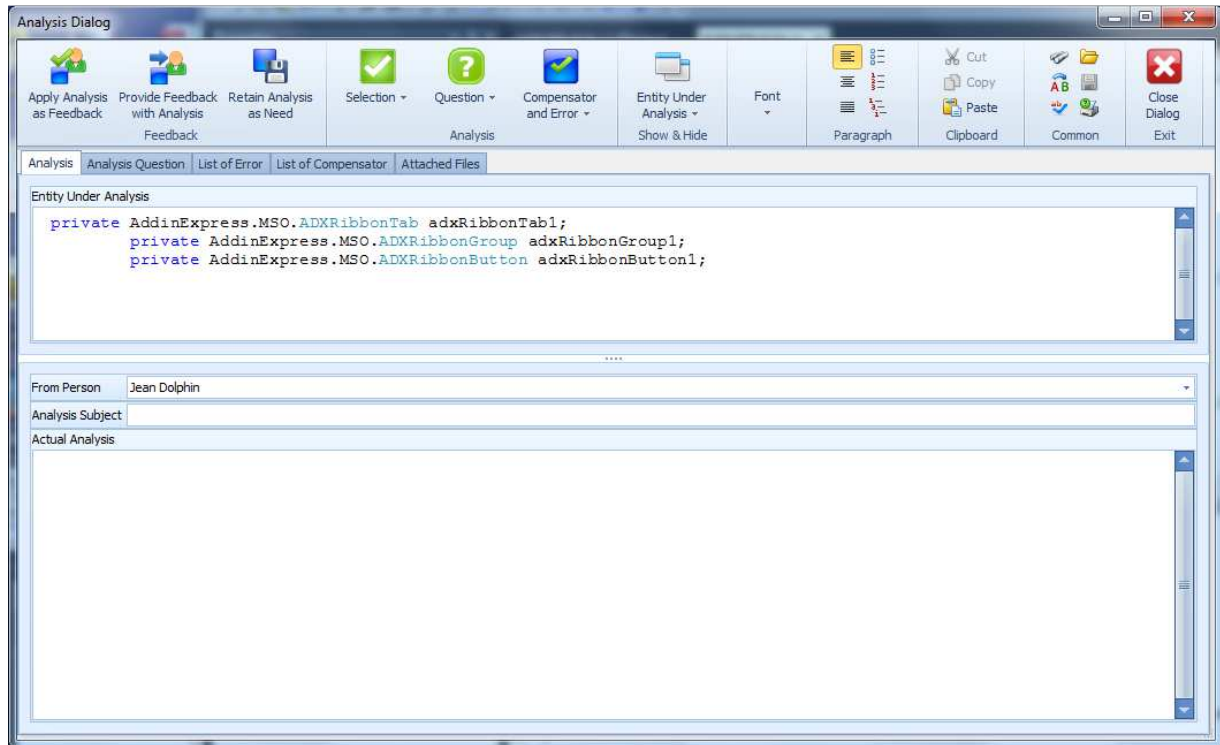
The screenshot shows a Windows-style dialog box titled "Request Feedback With Selection". It features a toolbar at the top with icons for "Request Feedback", "View List of Feedback", "View List of Analysis", and "Feedback". To the right of these icons are font settings (Times New Roman, size 12), paragraph alignment options, and clipboard functions (Cut, Copy, Paste). Further right are common actions like "Close Dialog" and "Exit". Below the toolbar are three tabs: "About Feedback", "About Selection", and "Attach Files". The "About Feedback" tab is active, displaying a form with the following fields:

From Person	Jean Dolphin
To Person	Michael David
Person Address	mdavid@yahoo.com
Application Name	MyAddin9.sln File: AddinModule.cs Line: 19 to 21
Communication Function	Review Selected Code
Communication Signal	Green
Feedback Subject	Intial Code Review

Below these fields is a section titled "Actual Request For Feedback" containing a text area with the text: "need to review the selected code and finish on time".



Selection can also be flagged for review and selection can also be reviewed from the code itself; for instance the selected code can be reviewed by simply choosing review selection from the context menu



To help with the code review, you can check out

- List of code to be reviewed
- List of reviewed code
- List of project communication
- List of analysis
- List of feedback
- Selection history
- List flagged selection
- List flagged selection for review

## Review

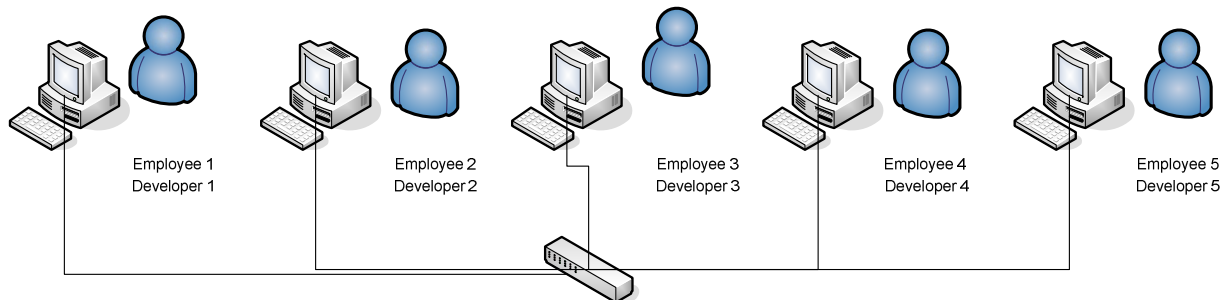
A reviewed is being viewed as an analysis, if you want to use your analysis to provide feedback to multiple people instead of the person who is requesting the reviewed, choose retain analysis as need, rather than provide feedback with the analysis immediately. Then after that you can go to list of retaining analysis and view that analysis and provide feedback with it to any user and you can keep doing that.



## Speak Logic Information Analysis for Visual Studio Multi User Environment

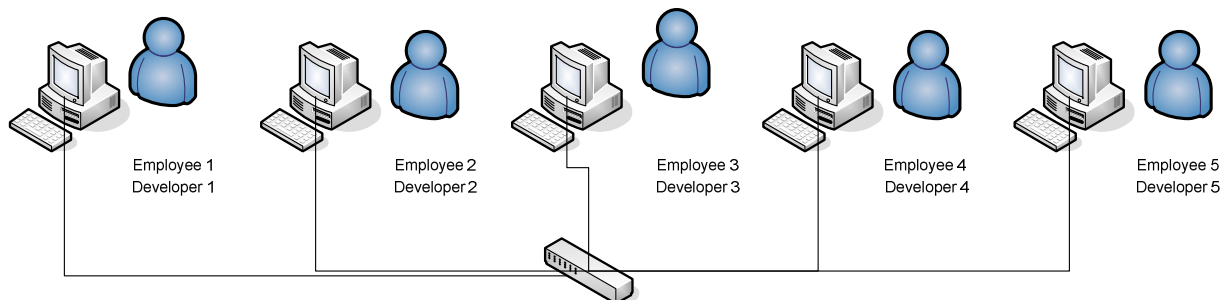
### Configuration 1

From the diagram below, the software is installed in each developer station, where in one developer machine a shared directory is created. That shared directory is visible to the other developers' machines where that directory is mapped to a network drive in those machines. In this case, SQLite is used as the database configuration.



### Configuration 2

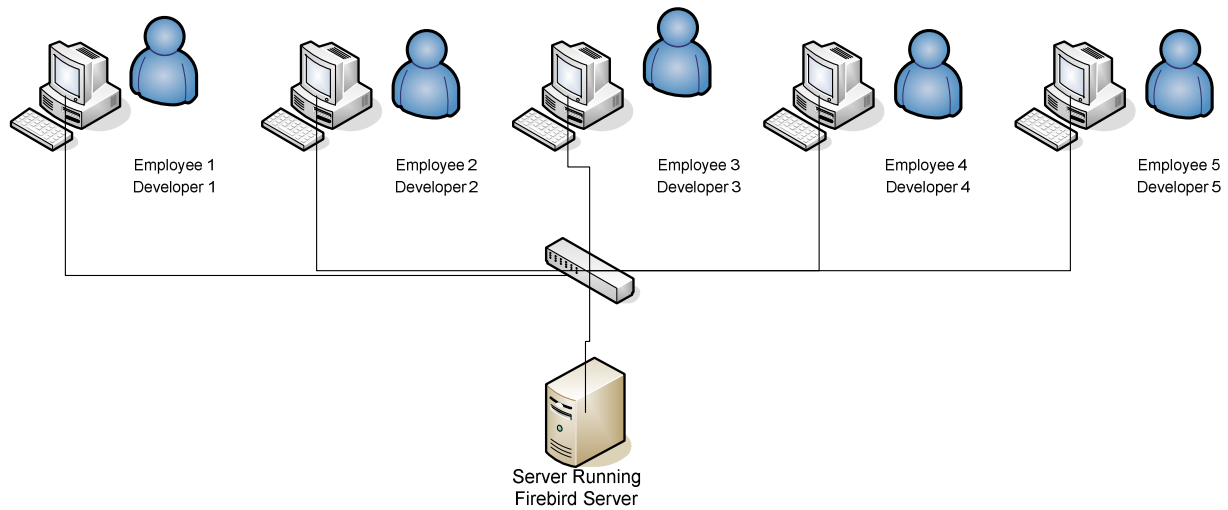
From the diagram below, the software is configured to use in a multi user environment in each machine. In one of the developer machine for instance Developer 1, Firebird Server is installed. In this case, each user must have identical configuration file. The server name can be the ip address of the station where Firebird Server is installed. The database directory should be a directory in the station where Firebird Server is installed. If the Firebird Server is installed in Developer 1 workstation, then the database directory is a directory in developer 1 station and that directory cannot be shared.



### Configuration 3

From the diagram below, Firebird Server is installed in a computer or a Server Station; in this case each developer can use the ip address of the server as the server name and the directory where the database file should be located. In this configuration, the database configuration text file should be the same in each developer stations. Again, the database directory cannot be a shared directory here.





## New Project

Since the current database can be used for multiple projects, you may need to rename the database if you want to start a new project and you don't want to use the existing database information in that project. In other words, if you start a new project and you don't want to use any information from the existing database, then you can rename the database file from the database directory. For instance you may want to start a project, where everybody who is working in that project is new in that project, therefore you may need to rename the database file. In this case you can rename "Information.db" to "Information2.db" or "Information.fdb" to Information2.fdb".

## Troubleshooting

If you receive an error message while connecting to the Firebird server, you might need to do the following. You may need to download and install Firebird client, then register the assembly using the command below.

```
C:\Program Files\Microsoft SDKs\Windows\v7.0A\bin\NETFX 4.0 Tools>
```

```
gacutil /i "C:\Program Files\FirebirdClient\FirebirdSql.Data.FirebirdClient.dll"
```

After executing the command, you will get this message. You only need to execute this command if you receive an error in the workstation, but you always need to do it in the server side.

```
Microsoft (R) .NET Global Assembly Cache Utility. Version 4.0.30319.1
```

```
Copyright (c) Microsoft Corporation. All rights reserved.
```

```
Assembly successfully added to the cache
```

C:\Program Files\Microsoft SDKs\Windows\v7.0A\bin\NETFX 4.0 Tools>

After executing the command above, if you still having problem connecting to the server, you will need to do the following from control panel -> administrative tools. You will need to do that for both private and public profiles.

